



Can you see the teeth of the moray eel?



Invented to discover: The new DELTA 30 PRO dermatoscope.

Since the LED^{HQ} elements have been repositioned in our new high-end dermatoscope, the light reaches deeper layers of the skin. This gives an extremely vivid, spatial impression of lesions – similar to a 3D image. So even the details of the details stand out.

The HEINE colorSHIFT function is a genuine world first. It allows you to easily adjust the colour temperature to suit your own viewing habits. Go from warm white to bluish white in 4 stages.

Regardless of whether you prefer working close-up or further away, the image is always sharp and crystal clear. Take a genuine deep dive at [heine.com](https://www.heine.com).

Find out more.



HEINE DELTA 30 PRO DERMATOSCOPE

Invented to discover



- **Unlock Exceptional Insights:** Experience a remarkable assessment of lesions' spatial structure, thanks to the revolutionary LED^{HQ} arrangement that allows deeper light penetration.
- **Vivid Distinction:** Easily differentiate between dark and white structures and patterns during polarisation, adding a dynamic edge to your observations.
- **Immerse in Crystal Clarity:** Enjoy a crystal clear image, whether you're diving into the details up close or surveying from a distance.
- **Expansive Vision:** Immerse yourself in a generous field of view, presenting a 'real' 30mm diameter, all made possible by the impressive 32mm lens diameter.



Dermatoscope Delta 30 PRO

\$3259

HEK23528305

Includes: DELTA 30 PRO with contact plate with scale, E4-USBC power supply with cable, and zipper case.

Dermatoscope Delta 30 PRO Bundle

\$4099

HEK23528306

Includes: DELTA 30 PRO with contact plate with scale, small contact plate, E4-USBC power supply with cable, charger 30 table charging station, universal smartphone adapter, and zipper case.



Choose the light colour to suit your own preferences with **HEINE colorSHIFT**



The light reaches deeper layers of the skin, giving an extremely vivid, spatial impression of lesions – **similar to a 3D image**



Switch between polarised and non-polarised light at the touch of a button = toggle function

HEINE DELTA 30 DERMATOSCOPE

Not only would the HEINE DELTA 30 win any beauty pageant, but it also stands out due to its very good imaging.

- Large field of view with real 30mm (lens 32mm) Ø
- Rechargeable battery with Li-ion technology: no memory effect; safely recharge the battery regardless of its state of charge
- Polarisation eliminates reflections and glare



★★★★★ PREMIUM PRODUCT

Crystal-clear image with the new achromatic HEINE optical system

Largest field of view of real 30mm (lens 32mm)

Ergonomic handling thanks to angled product design

Excellent colour rendering due to LED^{HQ}



Digital documentation with the exclusive HEINE DERM* app or the HEINE Cube System



\$2770

HEK23028305

Includes DELTA 30 Dermatoscope, contact plate with scale, USB cord with E4-USB medical approved plug-in power supply, case

*The Apple hardware is not included in the scope of delivery. For Apple hardware, please contact an authorised Apple distributor, an Apple Premium Reseller or Apple Inc. directly. Apple, the Apple Logo, iPhone and iPod touch are trademarks of Apple Inc., registered in the U.S. and other countries.



For more information download the product brochure from our website

THE HEINE DELTAone DERMATOSCOPE

Mobility and quality have now become one.

Small on the outside, big on the inside – crystal-clear images have been accomplished using the new achromatic HEINE optical system. What’s more, it produces extraordinary colour rendering, due to the quality of our LED^{HQ}. Examinations are now particularly comfortable due to the polarisation allowing doctors to work glare-free and without disrupting reflections. These three features – clarity, LED^{HQ} and non-reflective working – are what turn the DELTAone into a vital tool to carry in your pocket wherever you go.



Crystal-clear image with the new achromatic HEINE optical system

Glare-free and non-reflective working conditions thanks to polarisation

Fits into any pocket

Excellent colour rendering due to LED^{HQ}

LED^{HQ}
LED NOW IN HEINE QUALITY.

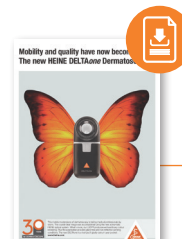
Digital documentation with the exclusive HEINE DERM* app or the HEINE Cube System

\$2020

HEK21028305

Includes DELTAone Dermatoscope, contact plate with scale, USB cord with E4-USB medical approved plug-in power supply, case

* The Apple hardware is not included in the scope of delivery. For Apple hardware, please contact an authorised Apple distributor, an Apple Premium Reseller or Apple Inc. directly. Apple, the Apple Logo, iPhone and iPod touch are trademarks of Apple Inc., registered in the U.S. and other countries.



For more information download the product brochure from our website

HEINE DELTA[®] 20T Dermatoscope

You can't TREAT what you can't SEE.
The classic specialist dermatoscope.

Toggle function | High performance LEDs | High-resolution optics

The DELTA 20 T offers unrivalled precision optics and the functionality to toggle between polarised and non-polarised illumination. No time consuming exchange of contact plates is necessary.

At the same time contact dermatoscopy with immersion liquids is possible at any point, allowing the examination method to be matched with the respective pigmented skin lesion to obtain the best diagnosis.

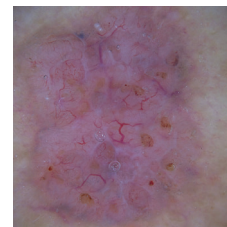
- **Crystal clear, high-resolution images** thanks to the high-quality achromatic optical system.
- **Detailed view of even the smallest structures**, the focusing system delivers 10 to 16 x magnification.
- **Toggle function for switching** between polarised and non-polarised illumination mode: allows detection of 'blink signs' when viewing crystalline structures and milia. No exchange of contact plates necessary.
- **Glare-free and reflection-free view** thanks to polarisation, even without immersion fluid. For fast and flexible work.



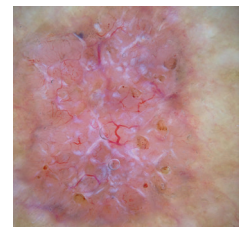


For more information download the product brochure from our website



"Blink Sign" observable in a basal cell carcinoma



Basal cell carcinoma non-polarised illumination



Basal cell carcinoma polarised illumination

DELTA 20T Dermatoscope Sets			
BETA4 3.5V USB		Delta 20T Dermatoscope Head, Contact plate 23 mm Ø dia. with scale, BETA 4 USB rechargeable handle, USB cord and plug-in power supply, Dermatoscopy compendium, Hard case	HEK26228388 RRP \$3245 \$3170
BETA4 3.5V NT		Delta 20T Dermatoscope Head, Contact plate 23 mm Ø dia. with scale, BETA 4 NT rechargeable handle, NT 4 Charger, Dermatoscopy compendium, Hard case	HEK26224420 RRP \$3908 \$3815

There's LED. And there's LED^{HQ}.

There are major differences when it comes to the quality that LEDs offer. HEINE has set a new standard which maintains that only the best is good enough, from the selection of materials to processing, from light intensity and thermal management to a colour rendering index as high as possible.

That's what we call LED in HEINE Quality – or LED^{HQ}.



HEINE diSTANCE working ring

Working ring for HEINE DELTA 30 dermatoscopes.

The working ring enables the user to examine and manage a lesion under magnification by maintaining a constant distance between the skin and the dermatoscope without contact.

- Pressure-free examination of raised skin lesions and superficial vessels
- Enables marking lesions for biopsy or resection



\$229
HEK00034103

HEINE Desk Charger

The high-tech charger for the high-end HEINE DELTA 30 and DELTA 30 PRO Dermatoscopes.

HEX00299212

\$451.20



HEINE Small Contact Plates

Examine difficult-to-access pigmented lesions with the HEINE DELTAOne and DELTA 30 Small Contact Plate.

HEINE DELTAOne Small Contact Plate

HEK00024207

\$317.35

HEINE DELTA 30 and DELTA 30 PRO Small Contact Plate

HEK00034206

\$337.85



HEINE Universal Smartphone Adaptor

This Universal smartphone adaptor for the HEINE Delta 30 and DELTA 30 PRO allows for digital dermatoscopic documentation using a smartphone camera.

HEK00034272

\$165



MANAGEMENT - NSW

Meet our Team: David

David's excellent listening skills and patience make him the perfect National Client Services Manager. Cool and calm in almost any situation, Dave can effectively solve even the most complex issues. We're so glad he is part of the team and now also looking after our Corporate Customers.

Being of Italian heritage, it's ironic that he doesn't like wine or olives. He is, however, a big fan of sports and loves watching his favourite teams (West Tigers and Western Sydney Wanderers) on the weekends. Spending time with his three kids is his favourite out-of-office activity.

What is your biggest pet peeve? Seeing the dishwasher stacked incorrectly.
What instrument can you play? The drums.



HEINE CUBE SYSTEM

DIGITAL MONITORING: EASY. EFFICIENT. SAFE.

An easy-to-operate digital documentation solution for wirelessly recording and editing dermatoscopic images.

Several examiners can easily capture images in their normal workflow with multiple mobile HEINE devices. The pictures are instantly and wirelessly transferred to the CUBE, where they can be retrieved, analysed, compared and managed from any laptop, PC or tablet using a simple web browser interface.

Innovative data management: A series of pictures of skin over time to help with detecting skin cancer at an early stage.

No annoying cables: Everything's simply done wirelessly.

Improved workflow: Fast-track patient care due to flexible room occupancy and reduced waiting times.

Relevant data is transferred from your Patient Management System (PMS) at the push of a button.

Intuitive and flexible image allocation: Overview photographs, individual pictures or series of pictures. Bodymap or overview function. Annotate images straight away or later on.

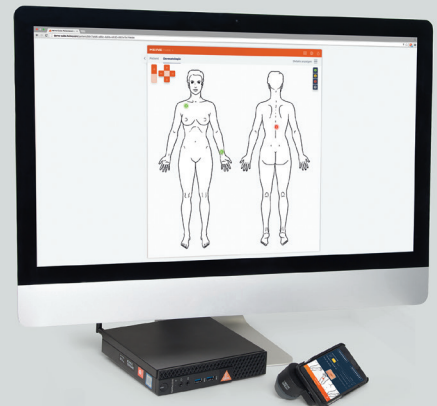
Smart ideas for serial documentation:

- During the examination: compare current pictures 1:1 with previous ones.
- Show four photos next to one another: help with showing progression over time.
- Slide-over: place one image on top of another.
- Contour comparison: put a previous picture's contours over the current shot.

Data protection: All the data and pictures are stored in total security, only locally and not on the image capturing device.

Only the practitioner / clinic has password-protected access. However, the patient can take the images away with them on a data carrier or as print-outs.

Plug in and work on. It's as easy as logging a new smartphone into the wireless network. Switch on the Cube, enter your credentials, install the app on the iPhone, slide onto the HEINE dermatoscope, and get cracking.



Interested? Scan the QR code and complete the form.

A TEAM MEDICAL ACCOUNT MANAGER WILL GET IN CONTACT TO TAKE YOU THROUGH THE SALES PROCESS.



Illuco Dermatoscope IDS-1100



Qualitative, high performing and user friendly skin examination device

Guarantees you the best performance with high quality optics, large field of view and highly optimised light. The perfect choice for any dermoscopy examination.

- High Precision optics – designed by professional optical engineers for clear & precise images with minimal distortion to field of view edges
- 10 x magnification
- 22mm wide field of view
- Easy to handle and focus
- Polarised and Non-Polarised LED illumination
- 3 levels of brightness control
- Protect glass (Contact plate) with easy detachable magnetic mechanism
- Small Contact plate for examination of narrow and hard to reach areas (6mm and 8mm)
- Contact and non-contact examination
- Automatically shuts down after 5 minutes
- Smartphone and camera compatibility
- Micro USB charger
- 7-year warranty



\$1290

RRP \$1450.00
ILLDS1100

Includes IDS-1100 dermatoscope, contact plate with scale, USB cord, cleaning cloth, soft pouch and instruction booklet.



Accessories Illuco IDS-100

Contact Plate 8mm	ILLCP8MM	\$205.10
Leather Pouch Black	ILL1100PCHBL	\$67.80
Leather Pouch Red	ILL1100PCHRD	\$67.80
Universal Phone Adaptor	ILLUNIADAP	\$130.00
Universal Adhesive Phone Adaptor	ILLCA216	\$64.75
Magnetic USB Charging Cable	ILLIDSAC0009	\$64.70
Protective Glass Magnetic Lens	ILLDERDER1013	\$233.10



Contact Plate - 6mm



Contact Plate - 8mm



Leather Pouch



Phone Adaptors



Universal Phone Adaptor



Universal Adhesive Adaptor