

# Bactol®

2% CHG

2% Chlorhexidine Gluconate

**ANTISEPTIC HAND  
& BODY WASH SOLUTION**

**Reduce  
infection rates**

+

**improve  
patient safety**

*with*

**Bactol 2% CHG**

**clinical hand &  
body wash**

- ✓ Broad spectrum bactericide
- ✓ Pleasant fragrance
- ✓ Superior lather with added emollients
- ✓ Convenient packsize range

Bactol® 2% CHG is an antiseptic hand and body wash solution with 2% w/v Chlorhexidine Gluconate. Designed for use as a procedural or antiseptic hand wash (non-surgical) and as a patient body wash. Broad spectrum bactericide.

Bactol® 2% CHG is pH balanced and gentle on the skin with added moisturisers. Bactol® 2% CHG has a pleasant citrus fragrance and superior lathering properties. The best choice for patient safety.

Proudly Australian made, you can rely on Bactol® 2% CHG to protect your patients, your staff and your reputation.

  
**Dr. Greg S. Whiteley**

**New to  
Market**

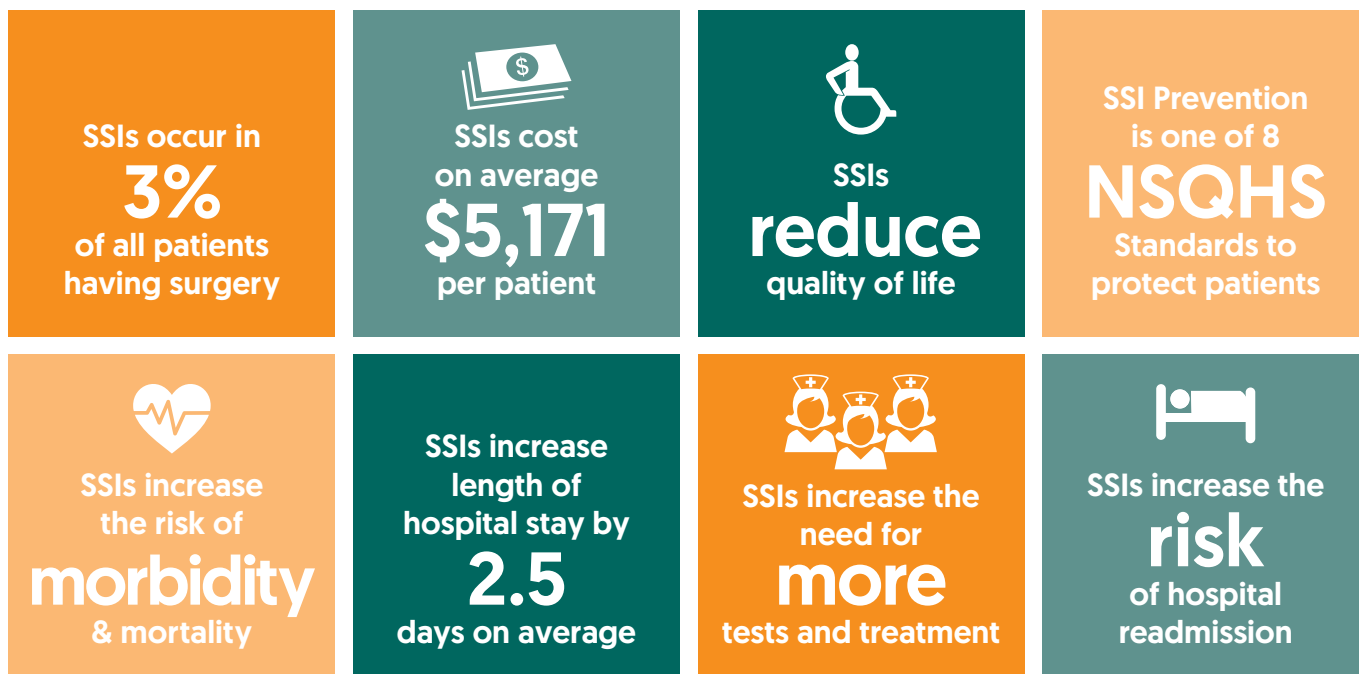


AUST R: 345050

# Surgical Site Infections (SSIs) and the impact on healthcare

A surgical site infection is an infection that occurs after surgery in the part of the body where the surgery took place. Surgical site infections can sometimes be superficial infections involving the skin only. Other surgical site infections are more serious and can involve tissues under the skin, organs, or implanted material.\*

SSI's significantly impact healthcare budgets and patient recovery times.



## Bactol® 2% CHG

**Features:** Antiseptic hand and body wash solution with 2% w/v Chlorhexidine Gluconate

**Intended use:** Clinical hand wash [Procedural antiseptic hand wash (non-surgical)], Topical antiseptic wash [pre-operative patient antiseptic body wash], Patient Body Wash [Presurgical prior to surgical or invasive procedures].

### Directions for use:

**For Antiseptic Handwashing:** Deliver 5ml [2-3 pumps] onto wet hands. Wash for 30 seconds. Rinse thoroughly and dry.

**For patient body washing and showering:** Wet body. Deliver sufficient product to work up a lather. Wash, rinse thoroughly and dry.

Packsize	Product Code	Dispensing System
48 x 80mL	012142	
12 x 500mL	012144	
6 x 1L	012146	Available for use in Whiteley Manual or Automatic Dispenser



For further information please contact your Whiteley Representative or call our Product Support Hotline on **1800 833 566**

\*Centers for Disease Control and Prevention - <https://www.cdc.gov/hai/ssi/ssi.html>. Infographic reference: McCaffery N. et al., PLOS ONE, 2021;16[18]