

# INTRODUCING SmartPULL\* Dispensing



The SmartPULL\* Exam Glove Dispenser Box has two openings to allow for better glove dispensing and LESS WASTE!



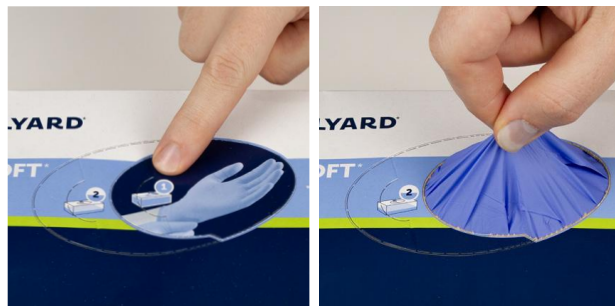
## DIRECTIONS FOR USE



### STEP 1

Remove the perforated carton opening at Tab 1.

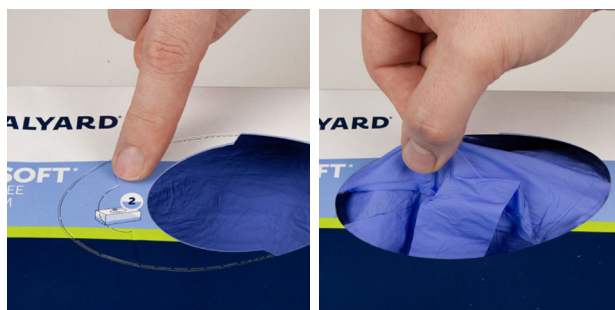
The smaller opening helps prevent multiple dispensing and glove waste.



### STEP 2

As the box empties and it becomes difficult to reach inside, remove the opening indicated by Tab 2.

Continue dispensing as you would from a traditional glove carton.



DON'T WEAR THE RISK. WEAR HALYARD

ALWAYS READ THE LABEL AND FOLLOW THE DIRECTIONS FOR USE.

\*Registered Trademark or Trademark of O&M Halyard or its affiliates. ©2022 O&M Halyard, Inc. All Rights Reserved.

