

Prepping with Confidence ... What Really Counts.



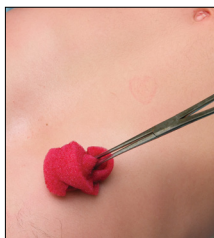
Application Technique and Drying Time.

3M™ SoluPrep™ Antiseptic Solutions
2% w/v chlorhexidine gluconate and 70% v/v isopropyl alcohol

3M™ SoluPrep™ Antiseptic Solutions

2% w/v chlorhexidine gluconate and 70% v/v isopropyl alcohol

Application Technique



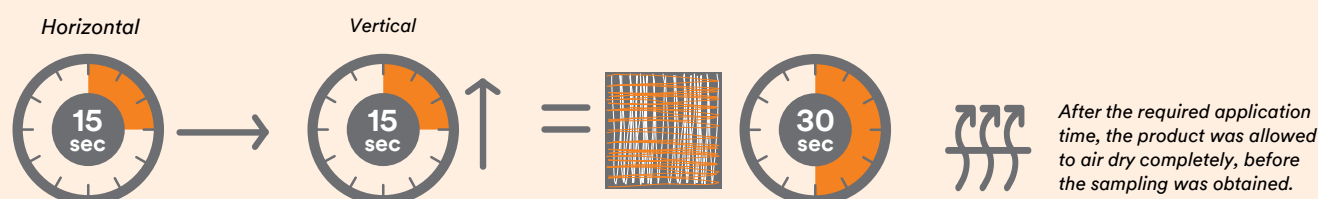
3M believes that to achieve the required efficacy, the application of our 2% Chlorhexidine Gluconate (CHG)/70% Isopropyl Alcohol (IPA) skin antiseptic requires a technique that differs from traditional practice. Historically, skin antiseptics were applied using a “boxed” or “concentric circle” single-pass painting technique, working from the centre of the prepped area out toward the periphery. These practices were established using single-ingredient and less effective products and the scientific evidence to support efficacy was lacking.



The superior activity of CHG/IPA solutions to these single-ingredient products has been demonstrated.^{1,2} It is important to recognise that the mechanism of action and the optimal application techniques may vary with different skin antiseptic drug products.

Test Application Method

During our studies, the antiseptic products were applied using a **continuous back and forth friction motion** moving horizontally across the centre of the treatment area to the periphery and repeating the motion over the desired treatment area for 15 seconds.



The continuous back and forth motion was then repeated over the same area moving in a vertical direction for an additional 15 seconds to achieve the required application time of 30 seconds on a dry body site.

Results

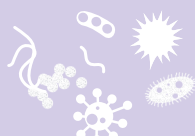
- Statistically equivalent log reductions obtained from the centre, mid and outer edges of the treatment area.
- An effective, evidence-based manner in which to apply the product and does not result in contamination of the treatment area.

Note: The product was repeatedly applied from the outer edges over the centre point (contrary to traditional concentric circle or boxed painting application) with no increase in bacteria observed at the centre point.

The goal is to obtain 30 seconds of application with friction by applying the antiseptic in two different directions to optimise binding of the chlorhexidine to the skin layers.

Summary

- The back-and-forth application method has been developed as a result of extensive research and in vivo testing.
- This method is necessary in order to achieve the highest efficacy in terms of log reduction and persistence of the solution.
- The mechanical effect of this application method allows the solution to penetrate into the layers of the skin where resident bacteria are found.



Disruption of the layer of sebum, sweat and organic matter found on the surface of the skin through the application of the antiseptic, combined with the mechanical back and forth action, enables the product to reach down through the layers of skin, and achieve optimum bacterial log reduction.

Application Time

Ensure you apply enough product to adequately cover the intended area.



Apply for 30 secs using friction in two different directions to help binding the chlorhexidine to the skin layers.

Drying Time

It's important that the solution be allowed to air dry completely:



a) To prevent the risk of fire in an operating room environment

Where ignition sources such as electrocautery and laser are present. When an ignition source is present, a minimum of 3 minutes for drying is required on hairless skin prior to draping or commencing procedure. Up to 1 hour may be required if hair is present.



b) To minimise the risk of skin irritation

If the site will be covered with drapes or dressings.



c) To achieve maximum bacterial reduction

The longer the solution is in contact with the skin, the greater the bacterial log reduction achieved.

In summary, the important points related to the application of 3M SoluPrep Antiseptic Solutions:



a) Apply enough antiseptic to adequately cover the intended area. Treatment area varies depending on the product size.



b) Apply antiseptic using a "back and forth" motion that provides friction.



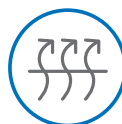
c) Binding of CHG to the skin is optimised when the product is applied in two different directions.



d) Apply the antiseptic for the appropriate length of time as per instructions for use.



e) Ensure the antiseptic is applied to all skin surfaces that will be exposed within drape opening, handled with sterile gloves during the procedure or covered by the finished dressing.



f) Ensure the antiseptic has completely air dried prior to the application of a drape, dressing or use of an ignition source. Dry time can be affected by volume of product, body site, presence or absence of hair, humidity etc.



g) Please refer to product packaging for complete instructions for use.

3M™ SoluPrep™ Antiseptic Solutions

2% w/v chlorhexidine gluconate and 70% v/v isopropyl alcohol



For Hospital and Healthcare
Professional use only.

Antiseptic for preparation of the patient’s skin prior to invasive procedure on dry skin sites only. Helps reduce bacteria that potentially can cause skin infection. Please refer to product package for complete instructions for use.

Precautions:

- Do not use on patients with known allergies to chlorhexidine or isopropyl alcohol.
- Tuck towels as needed under the area to be prepped to absorb excess solution.
- Not recommended for use on infants less than two months of age.
- Avoid contact with meninges, eyes, inner ears and mucous membranes as this may cause serious or permanent injury.
- Mild skin irritation may occur, stop use if it becomes more severe.
- Caution should be exercised with using the product on children’s skin.
- Keep out of reach of children. If swallowed, seek medical help.
- Chlorhexidine can cause severe allergic reactions. Seek immediate medical assistance if this occurs.

Warnings:

- For external use only.
- The product is non-sterile and should not be introduced into the sterile field without appropriate precautions.
- Do not use on open skin wounds.
- Flammable, keep away from fire or flame.
- To reduce the risk of fire, apply prep carefully.
- Solution contains alcohol and gives off flammable vapours.
- Allow product to evaporate completely prior to use in electrocautery procedures.
- Do not drape or use ignition source until solution is completely dry.
- Avoid getting solution into hairy areas.
- Wet hair is flammable.
- Hair may take up to one (1) hour to dry.
- Do not allow solution to drip or pool.
- Remove any antiseptic soaked material prior to draping.

Catalogue Code	Description	Volume	Unit of Measure (UOM)	Each per UOM	Minimum Order Qty
100.27	3M™ SoluPrep™ 2-Sponge Packs, 2% w/v CHG/70% v/v IPA, 30 Packs/Box, 4 Boxes/Case	50mL tinted solution (each sponge has a treatment area 40cm x 40cm)	Case	120 packs	1 case

References:

1. Darouiche RO, Wall MJ,Jr, Itani KM, Otterson MF, Webb AL, Carrick MM, et al.Chlorhexidine-alcohol versus povidone-iodine for surgical site antisepsis. N Engl J Med 2010; 362(1):18–26.
2. Chaiyakunapruk N, Veenstra DL, Lipsky BA, Saint S. Chlorhexidine compared with povidone-iodine solution for vascular catheter-site care: a meta-analysis. Ann Intern Med 2002; 136(11):792–801.

For clinical and sales information, contact your 3M Sales Representative
on 1300 363 878 (Australia) or 0800 80 81 82 (New Zealand).

go.3M.com/SoluPrepAUPI go.3M.com/SoluPrepNZDS



3M Medical Solutions Division

3M Australia Pty Limited
Building A, 1 Rivett Road
North Ryde, NSW 2113
Ph: 1300 363 454
3M.com.au/healthcare

3M New Zealand Limited
94 Apollo Drive,
Rosedale Auckland 0632
Ph: 0800 808 182
3M.co.nz/healthcare



To view the clinical application
video, scan the QR code with
your Smartphone.

3M, “3M Science. Applied to Life.” and SoluPrep are trademarks of 3M. All other trademarks are not trademarks of 3M. © 3M 2023. All rights reserved. Medicine classification AU: OTC Medicine. Medicine classification NZ: General Sale Medicine.

